

Notes on the Futures Report and the Cuts Report: A preliminary update

by Henning Bohn

Funding Measure:

- State GF adjusted for capital lease and lottery funds.

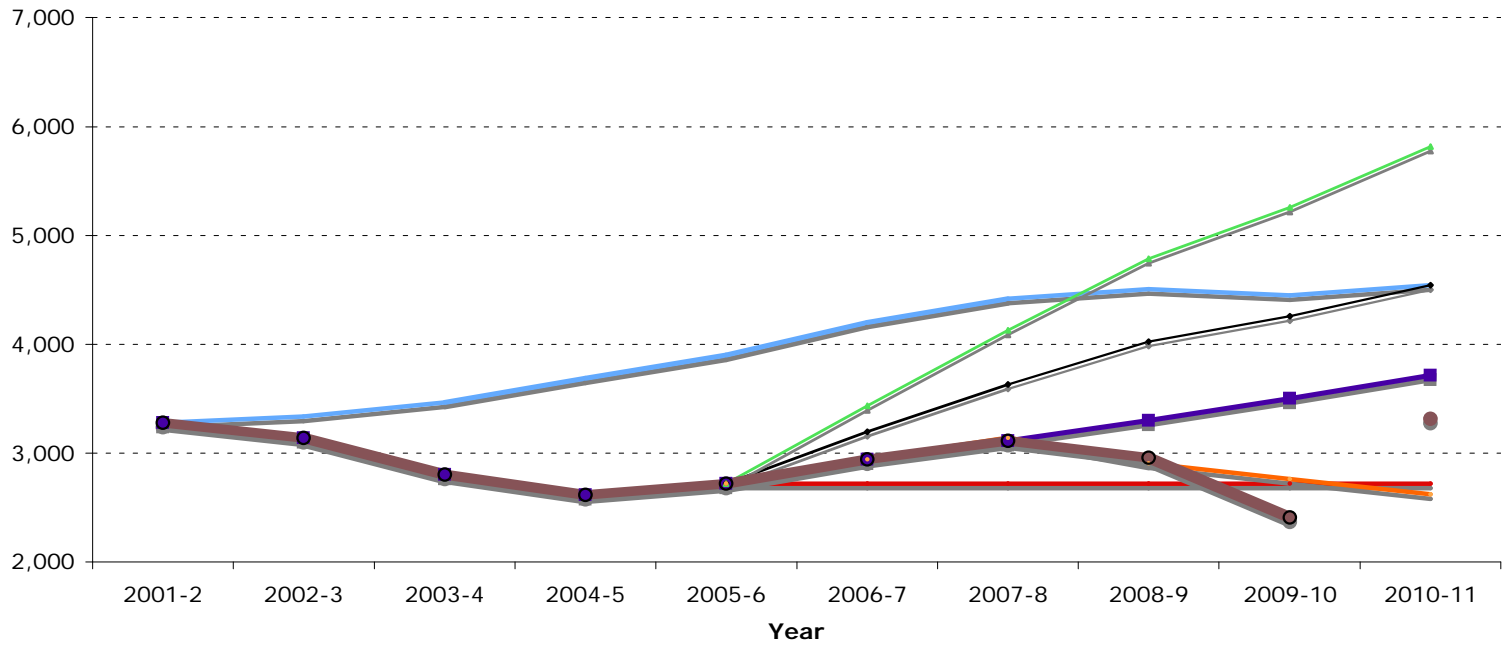
Several Scenarios:

- Benchmark Constant share state personal income as in 2001-02
- Compact Funding promised under compact with governor.
- Restore 2001 Pathway: Return to benchmark within 5 years.
- Modified Master Plan: Return to 1990 share of state personal income in 5 years.
- Funding Freeze Funding constant in nominal terms

Current Version:

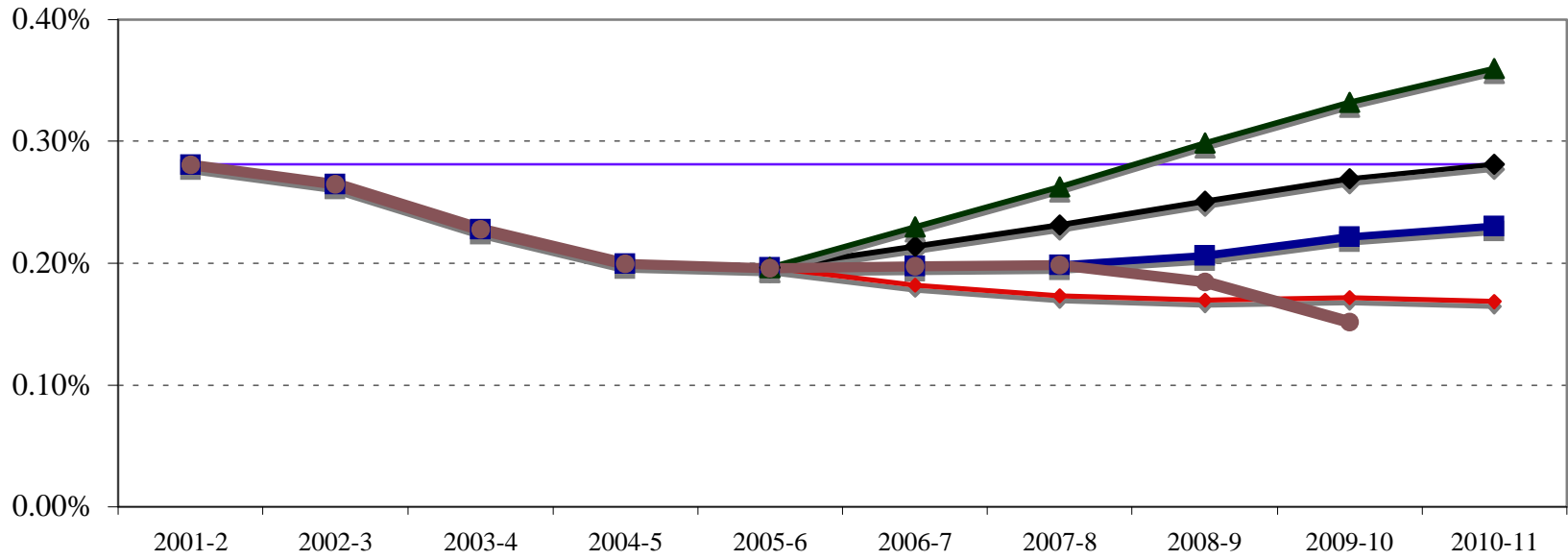
- Update actual data to 2009-10; Regent's budget for 2010-11.
- Consider the same alternatives.

State Funds for Operations in Nominal \$: Where do we stand?



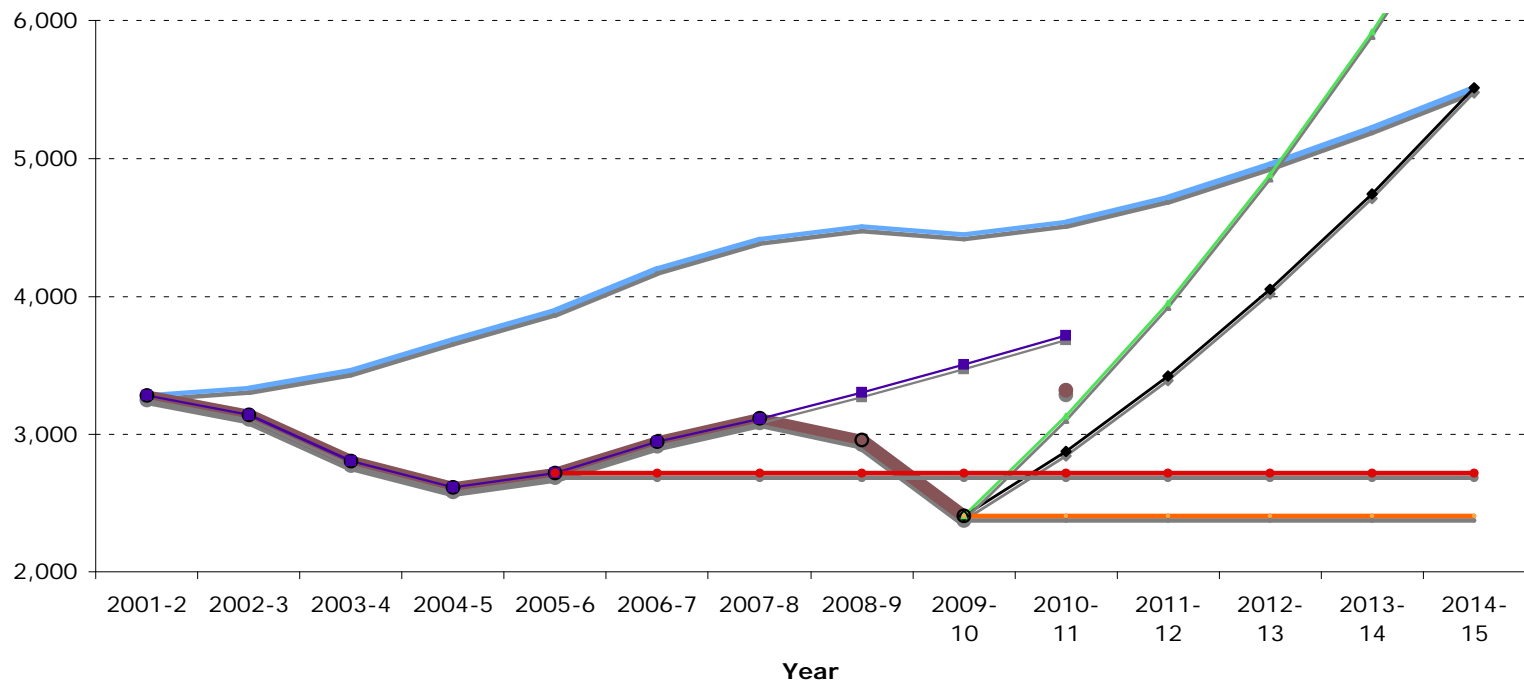
- Benchmark
- 3. Modified Master Plan (1990 Pathway)
- 6. Nov. 09 Update
- 1. Compact
- 4. Funding Freeze \$2.7b
- Target for 2010-11
- 2. Restore 2001 Pathway
- 5. Cuts report scenecario

State Funding to UC in percent of State Personal Income



- Benchmark
- 1. Compact
- 2. Restore 2001 Pathway
- 3. Modified Master Plan (1990 Pathway)
- 4. Funding Freeze
- Update Nov 2009

State Funds for Operations in Nominal \$: Updated Futures Report Scenarios



- Benchmark
- Compact
- Funding Freeze \$2.7b
- Update Nov 2009
- Restore 2001 Pathway
- Funding Freeze \$2.4b
- Target for 2010-11
- Modified Master Plan (1990 Pathway)

State Funding to UC in percent of State Personal Income

